



Tuesday 23 February 2021

## In this issue

- Special Character
- School Updates
- Sports
- Christian Service Leaders
- House Leaders
- Health
- Recycling in Hutt City
- Kowhai 1-7
- Nikau 8-11
- Pohutukawa 12-15
- Rata 17-19
- The Book Corner
- Contact Us

Dear Parents and Caregivers,

*from the Principal*

Many thanks for swinging so quickly into Level 2 action last week. It certainly helped with the smooth process of drop offs and pickups. Could I add a gentle reminder to parents and inform our new parents that if you are coming onto the school grounds to pick up your child at the end of the day, please keep well clear of the classrooms as this can prove very distracting for children. I appreciate that parents may arrive early to get a park in the afternoon but it would be very helpful if you could delay coming onto the grounds until closer to our 2.50pm bell time.

### Parking

Recently when I was on road patrol at the end of the day I had a police officer arrive and stand with me. He was getting a little perturbed with some of the driving he was witnessing outside our school. With that in mind could I remind parents and caregivers to please refrain from:

- Stopping on yellow lines around our school to drop off or pick up students
- Speeding up to prevent the road patrol signs going out
- Pulling into spaces with yellow lines if the road patrol haven't quite got their cones in place
- Making u-turns around the road patrol area without proper indication

On a positive note, we have had great success with many families organising a meeting spot away from the congestion at pick up times in particular. It would be wonderful to keep this going, perhaps even organising a walking bus some distance from the school and having children add a little more physical activity in their day by walking or scootering to meet you.

FOR MORE INFORMATION  
Click the links below

[School Website](#)

[Term Dates](#)



### First Reconciliation

Parent Meeting  
Tonight 7.30pm in  
the chapel



## Special Character

### A New Way Forward

Laudato Si' Pope Francis

the  
Lent  
appeal  
2021



The theme for **Lent 2021 is A New Way Forward**. *In our changing world we all need to work together to find a new way forward to transform our world into one that promotes love, hope and justice for all.*

To explore more have a look at the Caritas website <https://caritas.org.nz/lent>

There are **donation boxes/koha boxes** in the office. If you and your family feel like donating funds towards the Caritas lenten focus, please stop by or send your child in with a gold coin towards this wonderful cause.

***"In the heart of this world, the Lord of life, who loves us so much, is always present. He does not abandon us, he does not leave us alone, for he has united himself definitively to our earth, and his love constantly impels us to find new ways forward."* - Pope Francis, Laudato Si', #245, 2013**

# SCHOOL UPDATES



www.lunchonline.co.nz  
0800 565 565

## Lunch Break

### Kia Ora / Hi Everyone!

Welcome back to Term 1, 2021!

We hope you have had a restful and safe holiday. Thank you for your on-going support of Lunchonline.

Lunchonline would like to reassure you that all of our Lunchonline providers continue to implement strict guidelines as advised by the Government due to COVID 19. This includes physical distancing, strict hygiene, food safety and contact tracing where applicable.

### Updating Classrooms

At the beginning of every year your students will usually change classrooms and / or schools - please remind your parents to update their child's details by clicking "members" and changing their classroom name and school (otherwise their lunches will end up in the wrong location).

If the child no longer attends a school with Lunchonline then they can make the child "inactive" by unticking the box next to their name.



We know that sugary drinks are one of the most significant causes of poor oral health and contribute to childhood obesity and type 2 diabetes. Many thanks for supporting our healthy environment to be a water and plain milk only school. We do have water fountains available around the school to refill bottles or drink from.



MINISTRY OF EDUCATION  
TE TAHUHU O TE MĀTAURANGA

## SWIMMING LESSONS



### REMINDER

Swimming lessons start

**Monday 15 March**

so please don't forget swimming gear and check their class swim time with your child's class teacher



## Sports

## After School

## Zone Sports During School

Our school, along with 8 other schools, is part of the South Western Zone. The Zone runs a number of events during the school year with help from the staff and parents of each school. Some are competitive: cross country, swimming, athletics and others encourage students to participate, perhaps for the first time experiencing a new sport.

We look forward to the first of our Term 1 Zone events beginning with Non-Stop Cricket next Tuesday. This event is a 'participation event' for Year 3-8 students. We are fortunate to have been able to enter 12 teams in this event. Please note that there are times that schools in the Zone will have limited team entries depending on venues, staffing etc. Some keen students may have missed out this time but teachers will be looking to ensure that throughout the course of a year opportunities are available for everyone who is keen to participate.

### Term 1 Sport

Touch and Future ferns Netball for Years 1,2 are underway and thanks to those parents who have volunteered to take a team.

### Term 2,3 Sport

Year 7,8 Netball registration form has been shared with parents and we will close these responses on Friday 5 March at 3pm.

Registrations for Years 3 to 6 will be sent out this week and these close on Monday 15 March.

It is vital we have offers to coach and manage these teams or we cannot complete registrations-this is a requirement of Netball Hutt Valley.

**Please note** we are yet to receive any information for Basketball or Water Polo.

# SCHOOL UPDATES



## GASTRO BUGS

Just a timely reminder that if a student has suffered a gastro bug, the Ministry of Health recommend that school should not be attended until there has been 48 hours wellness (symptom free).

[Click here](#) for further information

## Recycling in Hutt City

Last week I attended a very informative session run by Hutt City Council, for local principals, about changes to waste and recycling systems and how this will impact on schools.

As I'm sure you are aware, the new bins and crates for rubbish and recycling, and green waste if you opted in, will be delivered for households over April, May and June. After this process is well underway the Council will then turn their attention to supporting schools with their waste and recycling efforts.

At the meeting we had to identify the efforts we currently have in place to address waste and support recycling.

I was able to put down that we:

- Work with our parent community to encourage litter free lunch boxes
- Recycle our card and paper every 3 weeks. This is down from every two weeks as of the start of 2020 and we know that we can improve this still
- Send a large bin of rubbish for landfill every 3 weeks. This is also down from every two weeks as of the start of 2020 and we can also improve on this too.

New initiatives for 2021:

- Recycle plastics 1 & 2, tin and aluminum cans.
- Thanks to the amazing work of Pohutukawa students last year, Mrs Senek is about to purchase bins for composting the majority of food scraps that we generate as a school. This new system has been designed by the students and they have excellent plans to keep it effective, efficient and sustainable.

I learnt at the meeting that 80% of Hutt Valley residents wanted to cover the costs of recycling for schools - a very generous and forward looking decision. Therefore, later in the year, we look forward to working with the Council team to make this happen. They realise the vital role that children can play in bringing about change and our value of stewardship aligns perfectly with this work.

**Kay Tester**



## Christian Service Leaders for 2021



aro  
stewardship  
joy faith

aro  
stewardship  
joy faith

*Oliver Farrell, Annie O'Sullivan, Exodus Malaesilia, Jane Doyle, Sebastian Manahan, Norrie Williams, Shannon Doyle, Matteo Kelly*

## House Leaders 2021



**Mission** Lucas Taylor, Emily Molenaar

**Redwood** Toby Jones, Gwen McGrath

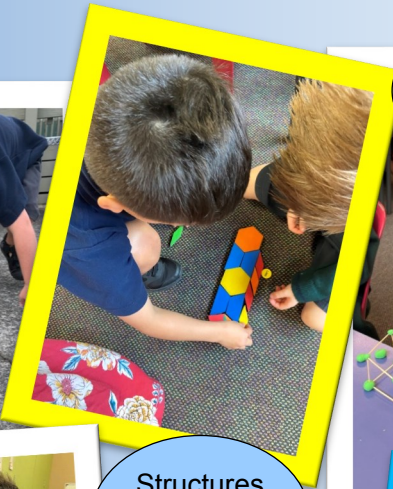
**Williams** Isaac Johnstone, Matilda Hall

**McKillop** Elijah Baron, Jemma Harding



**In Kowhai** we are beginning to find out about our initial understanding of the universal concept of 'Structure'. This will be the overarching idea for all our learning this year. Through all areas of the curriculum, we will look for the big ideas we have come up with about structure.

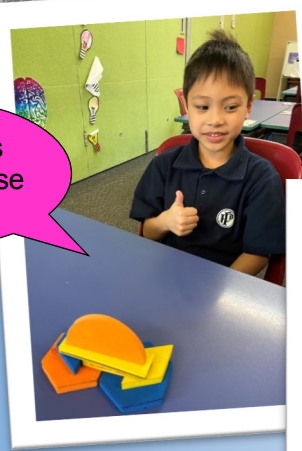
Structures have parts that interrelate



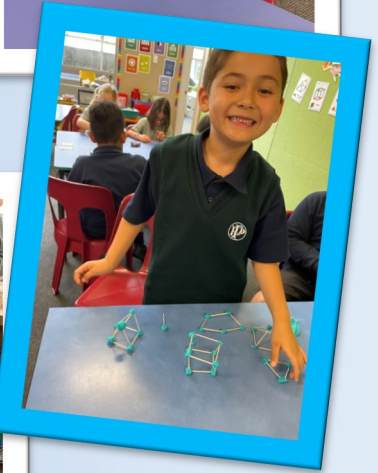
Structures can adapt and change



Structures follow rules



Structures have purpose



**Welcome to Nikau!**

In Nikau, we have started off the year with a Striking and Fielding PE unit. We have been learning striking, bowling and fielding skills, and then putting these skills into practise through various games and activities. We have also been looking at strategies we need to be a good team player.

- Bowling
- Striking
- Fielding

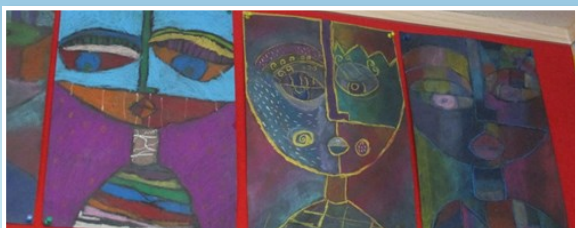




Pōhutukawa

12-15

The students in Rooms 13 and 14 were inspired to create faces using a similar style to that of contemporary artist Sandra Silberzweig. The focus was on the use of colour, line, patterns and shapes to create their faces. For many students it was the first time they worked with soft pastels to blend colours. They are on display in our classrooms and look amazing!



The students of Pohutukawa have been busy exploring the concept of 'Structure' through lots of different activities. One activity required them to explore a big idea about structure by creating a human machine based on it. They had a lot of fun discussing the big idea and how they could show this by just using their bodies!



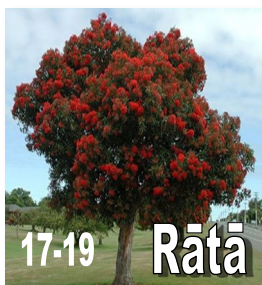
**Our big ideas about structure are:**

*Structures have parts that interrelate*

*Structure can be found in everything*

*Parts of structure support and are supported by other parts*

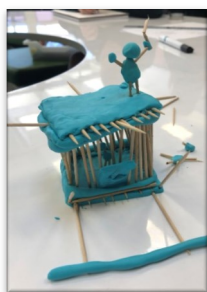
*Structure is no stronger than its weakest parts*



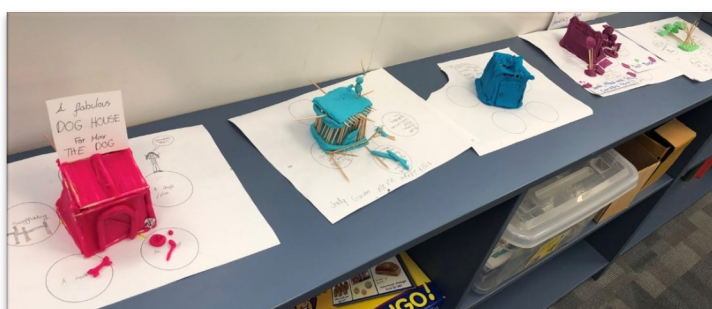
17-19

Rātā

This year the universal theme that we will be threading through our learning programme is 'Structure'. We have been generating ideas and activating our prior knowledge about anything and everything to do with the idea of Structure. First we brainstormed in groups everything we could think about to do with this topic. Next we were given some play-doh and some toothpicks, in small groups we were tasked with creating our idea of a stable structure. We were only given 10 minutes to complete the task! In the end we were quite surprised at the variety of ways that we all interpret our new universal theme. Here are some photos of us at work.



# Structure



# THE BOOK CORNER LIBRARY

## Book Picnics

We have been making the most of the lovely summer weather by taking our library books outside and having book picnics. Students are enjoying spreading out picnic rugs on the lawn and sharing library books with their friends or finding a quiet spot by themselves to read.



### School Office

**569 5759**  
[www.stpeterpaul.school.nz](http://www.stpeterpaul.school.nz)

### Absences

parents/caregivers call between 7.30-9.00am extn 1 if your child will be absent or late

### Information line

for up to date school activities and cancellations use extn 2

## Contact the School

### School Policy & Procedures

Login details are on the Parent Portal under About Us

### Parent Portal

[etap@school.parent.portal](mailto:etap@school.parent.portal)  
[etap@school.app](mailto:etap@school.app)  
(forgot your password contact Lisa in the school office)

Thank you for your ongoing support  
Mā te Atua koutou e manaaki, e tiaki hoki  
May God bless and care for you  
Kind regards **Kay Tester - Principal**



**aro**ha  
stewardship  
St Peter & Paul School  
**joy faith**





# Community News

**Tickets and more info at:**  
[www.fringe.co.nz](http://www.fringe.co.nz)

**STOPPING AND PARKING NEAR A SCHOOL**

When children arrive or leave school each day, make sure your driving behaviour is helping to keep them safe. Children and drivers need good visibility around schools to be able to see each other. Parking restrictions are in place for this reason. They protect our children against possible injury.

**As a driver, you can help to reduce the risks:**

- Park legally and safely at all times
- Do not exceed P5 or P10 time limits
- Park further away and walk with your child to or from the school gate
- If you need to turn around after dropping off / picking up, find a safe place well away from the school gate
- Always slow down as you approach a busy school or pedestrian crossing
- Choose alternatives to driving – allow your child to walk to school, start a walking school bus, or find another family to carpool with

**PARK SAFELY NEAR SCHOOLS**

Stopping on broken yellow lines, across a driveway, on a bus stop, and double parking are illegal and risky manoeuvres that endanger children and other pedestrians. If you choose to stop or park illegally you risk receiving a fine.

Stopped / parked on broken yellow lines	\$60
Double parked	\$60
Stopped / parked in front of or within 1 metre of a vehicle entrance or driveway	\$40
Stopped / parked on a bus stop	\$60
Stopped / parked on the footpath	\$40
Stopped / parked on or near a pedestrian crossing	\$60
Any stopping or parking that is inconsiderate to other road users, including pedestrians	\$60
Exceeding a P5 or P10 time limit (by up to 30mins)	\$12
Failing to stop and remain stopped for a school patrol sign. Fine and 20 demerit points	\$150

Please put children's safety first at all times. Enforcement by Police and parking wardens is designed to keep all road users safe.

**HUTT CITY**  
TE AWA KAIRANGI

## Are you interested in developing a mission focused response to a civil emergency?

Catholic Social Services is seeking applications for a nine week fixed term contract. The purpose of this contract is to analyse the Archdiocese of Wellington's pastoral response during the Civil Emergency in 2016-17 following the Kaikoura Earthquake and during the 2020 Covid-19 Lockdown.

You will prepare and write a straightforward emergency plan that the Archdiocese of Wellington can put in place to meet the psychosocial and pastoral needs of the community within the geographical area of the Archdiocese. This plan will focus heavily on the Archdiocesan outward mission response.

The successful applicant will have proven experience in preparing and writing succinct planning documents which include effective processes. The successful applicant will also have significant understanding of current psychosocial responses appropriate for people with multiple and complex needs.

*If you are interested in making an application or are looking for more information please contact Karen Holland, Kaiarahi Catholic Social Services at: [reception@wn.catholic.org.nz](mailto:reception@wn.catholic.org.nz) or call 043858642 to get a copy of the Scope of Work document.*